

## Interior Features

- 1, 2 and 3 Bedroom Floorplans
- Refrigerator
- Dishwasher
- Stove
- Garbage Disposal
- Washer and Dryer Connections
- Blinds Throughout
- Gigantic Walk-in Closets
- Private Patios
- Pet Friendly\*\*



**Canterbury Crossing** is conveniently located in the Northeast section of Abilene, Texas! Just minutes from the Abilene Zoo and I-20, Canterbury Crossing is accessible to all that Abilene has to offer! At Canterbury Crossing, you'll enjoy shopping, dining and entertainment - all just minutes away.



1250 Yeomans Road  
Abilene, Texas 79602

**Phone: (325) 677-8800**  
Fax: (325) 677-8918



## Exterior Amenities

- Outside Storage Room
- Swimming Pool
- Basketball Court
- Playground
- Picnic Area With Grill
- 24 Hour Emergency Maintenance
- Handicap Accessible in Select Units  
Garage Rental Available
- Close Proximity to Shopping Centers, Airport and Schools
- Easy Access to Freeways and Public Transportation
- On Site Professional Management
- After School and Summer Youth Programs
- Credit Card Payments Accepted



*Westlake Housing communities  
offer affordability and comfort!*

Professionally Managed By:



Discover why our residents say:

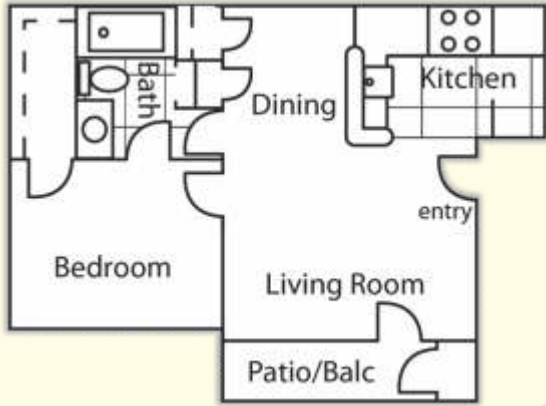
*"What a Great  
Place to Live!"*

\*In Select Units Only

\*\*Breed restrictions and fees apply

All information is subject to change without notice.

1 Bedroom / 1 Bath 576 Sq. Ft.



1 Bedroom / 1 Bath 608 Sq. Ft.

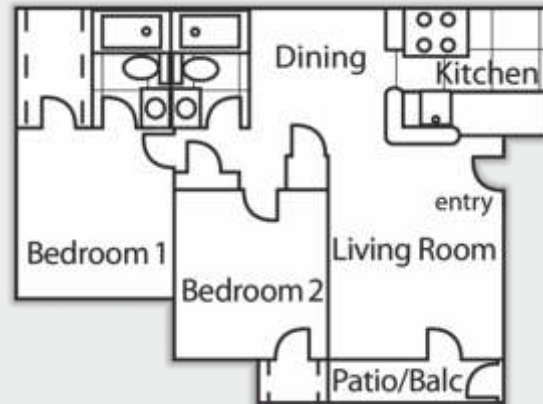
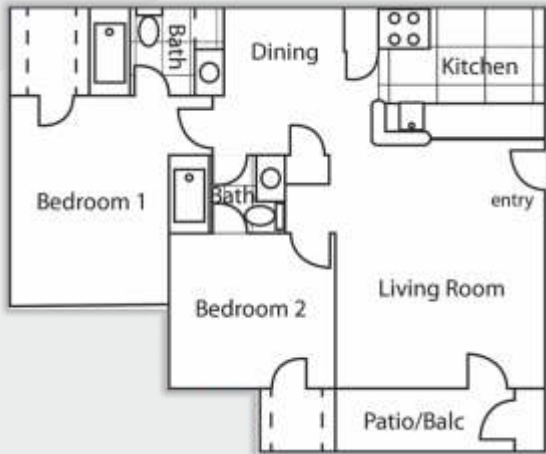
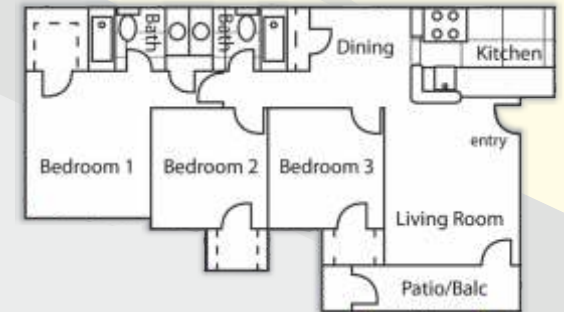


2 Bedroom / 1 Bath 781 Sq. Ft.



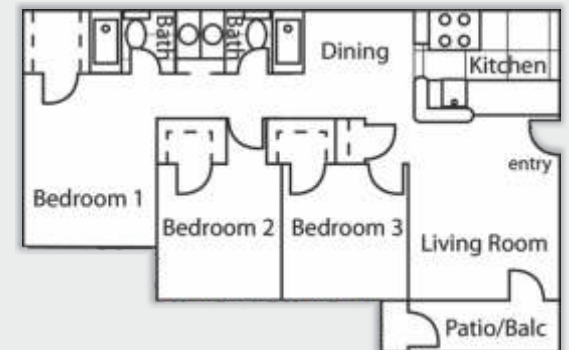
Our Mission is to provide high-quality affordable housing for our residents.

3 Bedroom / 2 Bath 997 Sq. Ft.



2 Bedroom / 2 Bath 895 Sq. Ft.

3 Bedroom / 2 Bath 1000 Sq. Ft.



2 Bedroom / 2 Bath 880 Sq. Ft.



All square footage is approximate

Phone: (325) 677-8800